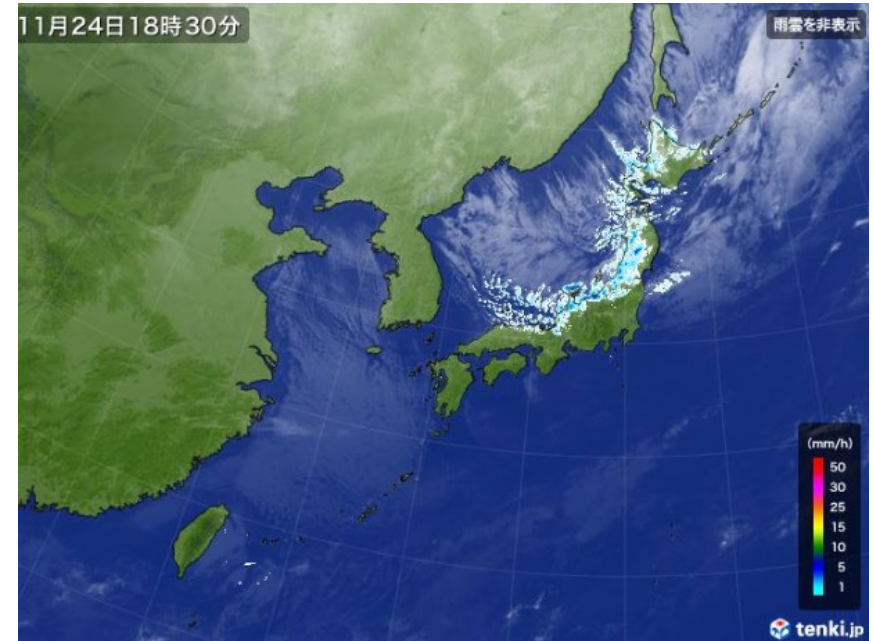
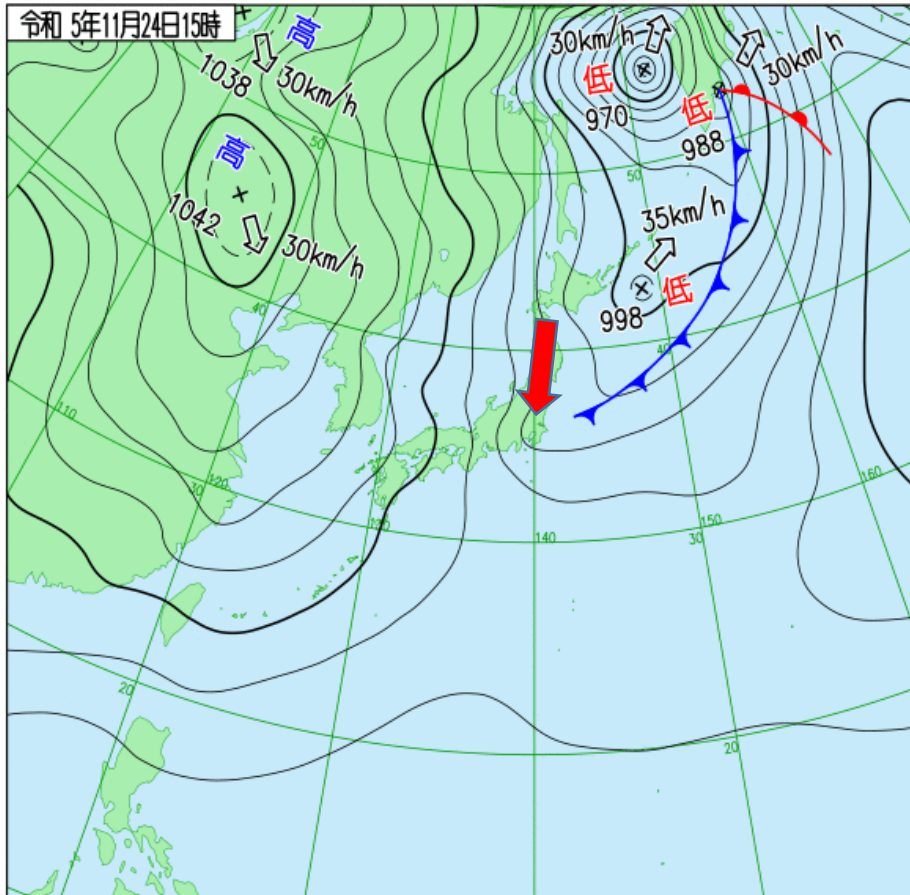
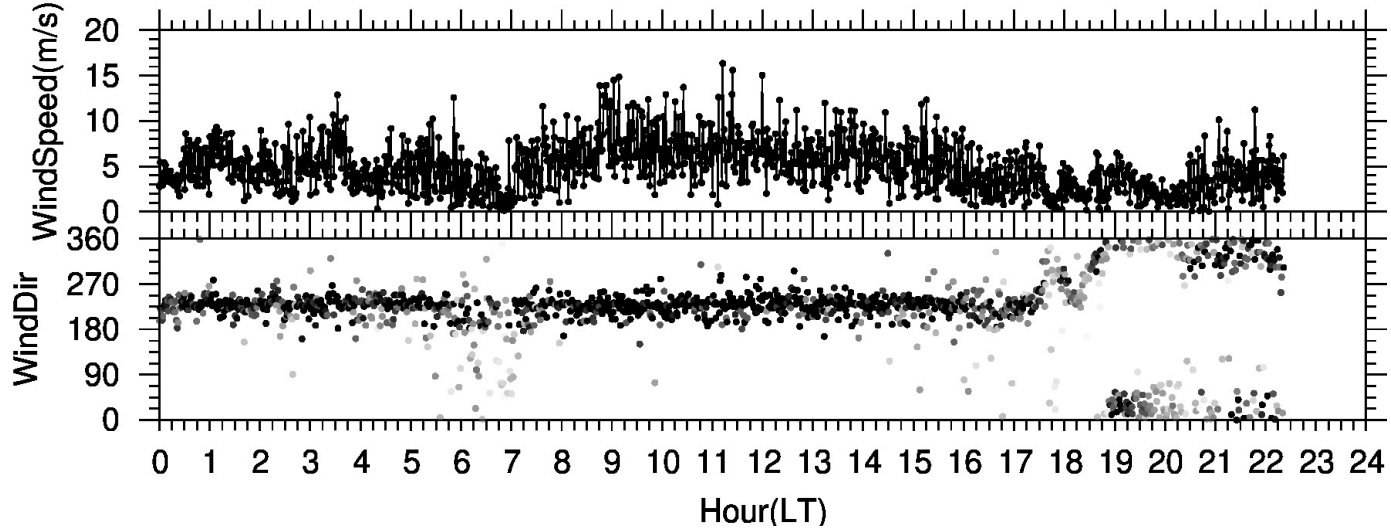


Weather maps suggested northerly winds, but ...

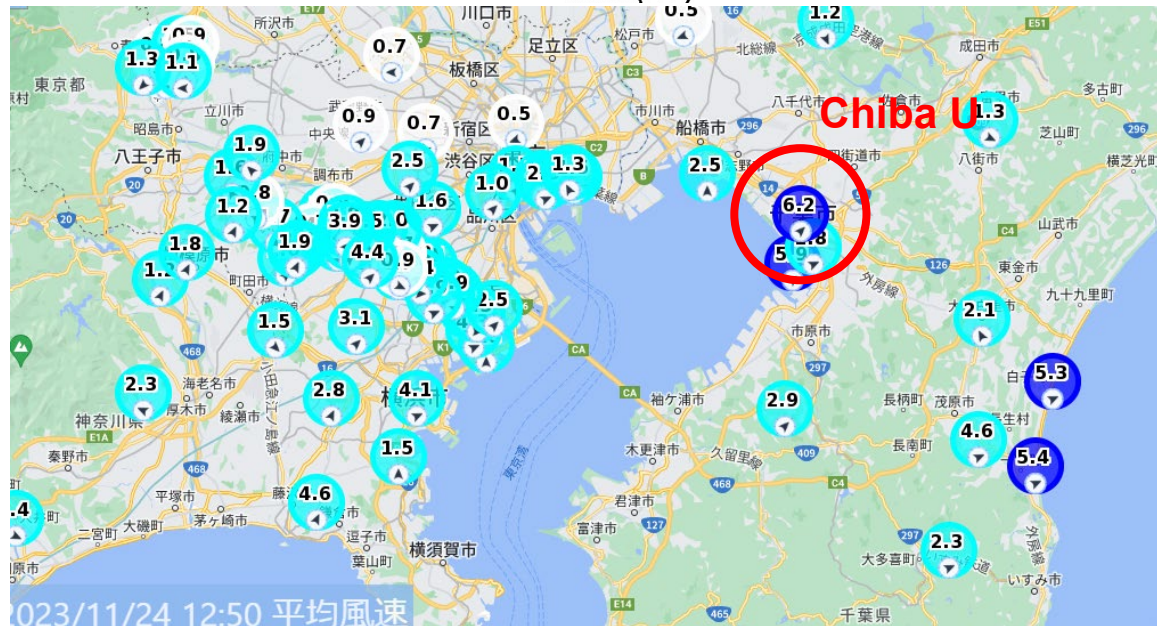


Southwesterly wind was dominated in daytime today (Nov. 24) – Why ?

MaxiMet @ Chiba U



POTEKA



Lightning activity was high on the Sea of Japan

Within the last 24 hrs since November 24, 18:30



2時間以内・・・✖: 雲間放電 ■: 落雷

1～3時間・・・✦: 雲間放電 ■: 落雷

3時間以上前・・・✖: 雲間放電 ■: 落雷

このページの情報は、気象庁の観測している雷監視システム（LIDEN：Lightning DEtection Network system）を表示しているものです。

Passage of dust aerosols in last few days

